



focus
..... instruments

 **EQUiTEC**

SHAKERS
MIXERS
MILLS
BATH CRYOSTATS
THERMOSTATIC BATHS



Model	OM10E
Reference	10000-01024

Shaking

Max. load (Kg)	10
Amplitude (mm)	10
Speed range (rpm)	50-400
Resolution (rpm)	5
Timer (min)	0-120

General data

Useful surface (mm)	350 x 400
Dimensions (mm)	410 x 570 x 140

FEATURES

- Speed adjustable, controlled by microprocessor.
- Constant speed independently of the load.
- Smooth and progressive start and stop, independently of the selected speed.
- Digital display LCD backlit indicating the selected and actual speed and timer (with audible alarm).
- Membrane push-button control.
- Automatic restart after unexpected shut down keeping the same parameters as before the incident. An incident sign appears on the display.
- Quiet operation. Suitable for continuous running.



Model	OL30-ME	OL30-HE
Reference	10000-01011	10000-01051

Shaking

Max. load (Kg)	25
Amplitude (mm)	30
Speed range (rpm)	30-220
Resolution (rpm)	5
Timer (min)	0-120

General data

Useful surface (mm)	Standard	Brushless <small>(long-term, for continuous running)</small>
Useful surface (mm)	350 x 400	
Dimensions (mm)	410 x 570 x 140	

FEATURES

- Speed adjustable, controlled by microprocessor.
- Constant speed independently of the load.
- Smooth and progressive start and stop, independently of the selected speed.
- Digital display LCD backlit indicating the selected and actual speed and timer (with audible alarm).
- Membrane push-button control.
- Automatic restart after unexpected shut down keeping the same parameters as before the incident. An incident sign appears on the display.
- Quiet operation. Suitable for continuous running.



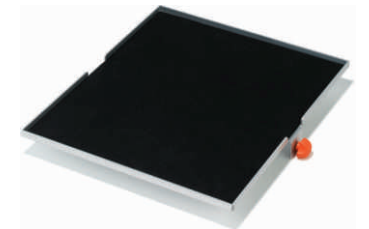
Description	UNIVERSAL PLATFORM
Reference	20000-00041
Comment	350 x 400 mm. With 5 rollers. To fix flask, precipitation vessels, bottles, grids of test tubes, etc.



Description	DOUBLE UNIVERSAL PLATFORM
Reference	20000-00131
Comment	350 x 400 mm. Same as the previous one, but with 2 shelves and 10 rollers.



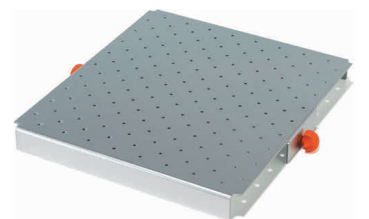
Description	NON-SLIPPING PLATFORM
Reference	20000-00084
Comment	350 x 400 mm. Suitable for Petri dishes, plates small containers, etc.



Description	DOUBLE NON-SLIPPING PLATFORM
Reference	20000-00157
Comment	350 x 400 mm. Same as the previous one, but with 2 shelves.



Description	PLATFORM*
Reference	20000-00040
Comment	For fastening erlenmeyer flask clips. * Another version available for magnet fastening of the clips, for more free conformation of the clip. Ask for the references.



Description	ERLENMEYER FLASK CLIPS*
Reference	20000-00046 / 50 ml. (30 u/) - 20000-00047 / 100 ml. (20 u/) 20000-00048 / 250 ml. (12 u/) - 20000-00049 / 500 ml. (9 u/) 20000-00099 / 1.000 ml. (6 u/)
Comment	* Another version available for magnet fastening of the clips, for more free conformation of the clip. Ask for the references.



Description	PLATFORM FOR SEPARATING FUNNELS
Reference	20000-00044
Comment	For 5 separating funnels of 250 cc, 5 separating funnels of 500 cc or 3 separating funnels of 1.000 cc.





SWING 3D

3D digital rocking mixer



Model	SW8-3DE
Reference	10000-01028

Shaking

Max. load (Kg)	5
Amplitude (mm)	+/-8° (in all the planes, 3D)
Speed range (rpm)	5-50
Resolution (rpm)	1
Timer (min)	0-120

General data

Useful surface (mm)	290 x 260
Dimensions (mm)	340 x 400 x 125

FEATURES

- Rocking movement in all the planes, 3D effect.
- Speed adjustable, controlled by microprocessor.
- Constant speed independently of the load.
- Smooth and progressive start and stop, independently of the selected speed.
- Digital display LCD backlighted indicating the selected and actual speed and timer (with audible alarm).
- Membrane push-button control.
- Automatic restart after unexpected shut down, keeping the same parameters as before the incident. An incident sign appears on the display.
- Non-slipping surface.
- Quiet operation. Suitable for continuous running.

BATH CRYOSTAT

Refrigerated digital recirculating bath



Model	BC10E
Reference	10000-01116

Thermostatization

Max. load (l)	12
T range (°C)	-10 -100
Resolution (°C)	0,1
Stability (°C)	+/- 0,1

General data

Tank material	Stainless steel AISI 304
Inner Dimensions (mm)	250 x 130 x 150
External Dimensions (mm)	500 x 450 x 570

Note: for other sizes or other temperatures (until -40°C), ask for it.

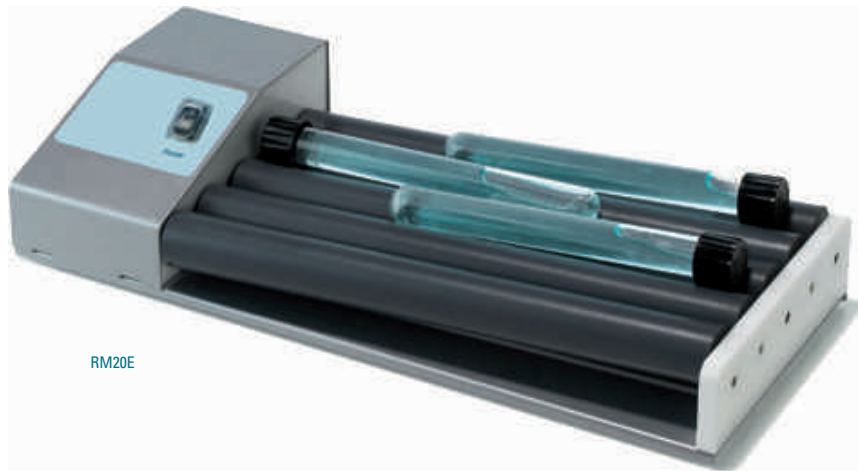
FEATURES

- Temperature controlled by microprocessor, with integrated high precision Pt100 sensor, and ARA V2 algorithm of temperature regulation with "fuzzy logic" control.
- Inner tank made of stainless steel AISI 304, and metallic housing protected with an Epoxi paint of great resistance to corrosion.
- Digital display LCD backlighted with indicating of the selected and real value of temperature.
- Membrane push-button control.
- CFC free compressor of 1/5 HP, noiseless and without vibration.
- Circulation pump (6 l/min) (max. pressure 200 mbar).
- External faucets for external thermostatzation.
- Automatic restart after unexpected shut down, keeping the same parameters as before the incident. An incident sign appears on the display.
- External faucets for external thermostatzation.
- Safety thermostat cut out indicator lamp. The unit will cut out if there is insufficient liquid or if the temperature exceeds the maximum temperature.



ROLLERMIX

Rotatory and oscillating mixer with rollers



RM20E

Model	RM20E
Reference	10000-01009

Mixing

Inclination angle*	0°-90°
Speed range (rpm)	20 (fix)

General data

Length of rollers (mm)	320
Dimensions (mm)	450 x 190 x 80

* Can be ordered without oscillation movement.

FEATURES

- Mixer with simultaneous double rotative-oscillating movement for test tubes, bottles and closed containers.
- Fix rotation speed.
- Five agitation rollers forming four available rails.
- Geared synchronisation with no wear.
- Brushless motor with unblocking system by clutch.
- Quiet operation, suitable for continuous running.

ROLLERMIX D

Digital rotatory and oscillating mixer with rollers



RM120-DE

Model	RM120-DE
Reference	10000-01071

Mixing

Inclination angle*	+/-4°
Speed range (rpm)	20-150
Resolution (rpm)	5
Timer (min)	0-120

General data

Length of rollers (mm)	320
Dimensions (mm)	550 x 190 x 80

* Can be ordered without oscillation movement.

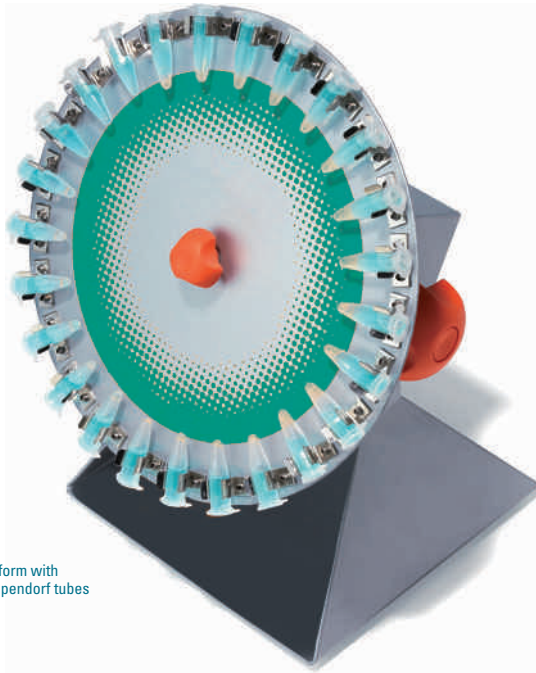
FEATURES

- Mixer with simultaneous double rotative-oscillating movement for test tubes, bottles and closed containers.
- Speed adjustable, controlled by microprocessor.
- Five agitation rollers forming four available rails.
- Digital display LCD backlit indicating the selected and actual speed and timer (with audible alarm).
- Membrane push-button control.
- Geared synchronisation with no wear.
- Brushless motor with unblocking system by clutch.
- Automatic restart after unexpected shut down, keeping the same parameters as before the incident. An incident sign appears on the display.
- Quiet operation, suitable for continuous running.



NORIA

Rotatory mixer



N12E + disc platform with clamps for 25 Eppendorf tubes

Model	N 12E
Reference	10000-01013

Shaking

Angle of slope (mm)	0°-90°
Speed range (rpm)	12 (fix)

General data

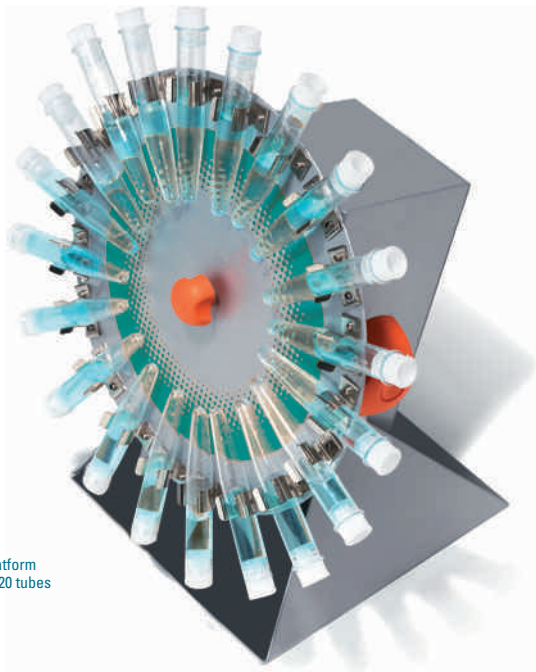
Dimensions (mm)	320 x 260 x 200
-----------------	-----------------

FEATURES

- For rotary agitation, for tubes from 6 to 35 mm diameter.
- Fix rotation speed.
- Allow placement and removal of the tubes without stop the instruments.
- Completely adjustable slope from 0° to 90°.
- Security clutch allows to stop rotary motion with the hand without problems.
- Antiscratching surface with chemical resistant coating.
- Suitable for continuous running.

NORIA R

Rotatory mixer adjustable



NR50E + disc platform with clamps for 20 tubes

Model	NR50E
Reference	10000-01062

Shaking

Angle of slope (mm)	0°-90°
Speed range (rpm)	5-50

General data

Dimensions (mm)	320 x 260 x 200
-----------------	-----------------

FEATURES

- For rotary agitation, for tubes from 6 to 35 mm diameter.
- Rotation speed adjustable by means of a potentiometer, controlled by microprocessor.
- Allow placement and removal of the tubes without stop the instruments.
- Completely adjustable slope from 0° to 90°.
- Smooth and progressive start and stop.
- Security clutch allows to stop rotary motion with the hand without problems.
- Antiscratching surface with chemical resistant coating.
- Suitable for continuous running.



Description

Reference

DISC PLATFORM WITH CLAMPS FOR:

- 20000-00093
25 tubes Ø 6-7 mm

- 20000-00094
25 tubes Ø 8-9 mm

- 20000-00095
25 tubes Ø 10-11 mm Eppendorf

- 20000-00133
20 tubes Ø 12-13 mm

- 20000-00134
20 tubes Ø 14-15 mm

- 20000-00135
20 tubes Ø 16-17 mm

- 20000-00136
19 tubes Ø 18-19 mm

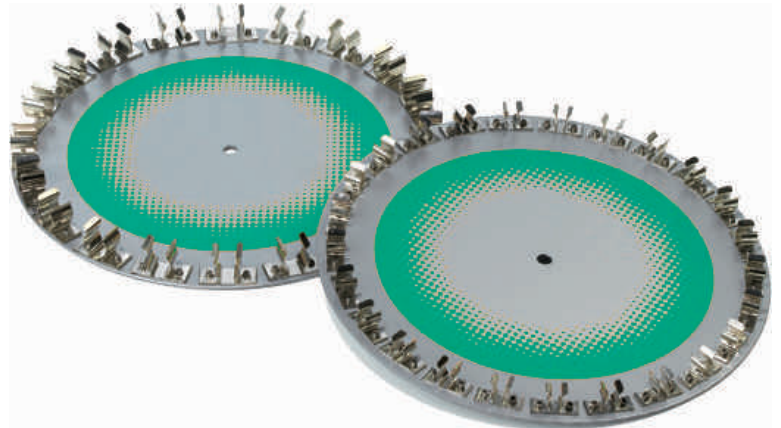
- 20000-00137
16 tubes Ø 20-21 mm

- 20000-00138
14 tubes Ø 22-23 mm

- 20000-00139
14 tubes Ø 24-25 mm

- 20000-00140
14 tubes Ø 27-30 mm

- 20000-00141
10 tubes Ø 32-35 mm



Description

Reference

RACKS FOR:

- 20000-00051
60 culture tubes Ø 12-13,5 mm

- 20000-00052
36 centrifuge tubes 15 ml Ø 16-17,5 mm

- 20000-00053
20 centrifuge tubes 50 ml Ø 29-31 mm

- 20000-00096
60 tubes Eppendorf from 0.5 to 2 ml





BATH D

Digital thermostated bath



B112-DE + thermometer and support



B245-DE + support for tube racks + tube racks

Model	Reference	Max. vol. (l)	T. range (°C)	Resolution (°C)	Tank material	Useful dim. (mm)	Ext. dim. (mm)
B105-DE	10000-01109	5	Amb. T + 5 -100	0,1	Stainless steel AISI 304	300 x 150 x 130	330 x 180 x 300
B112-DE	10000-01110	12				330 x 300 x 130	360 x 330 x 300
B120-DE	10000-01111	20				500 x 300 x 130	530 x 330 x 300
B145-DE	10000-01112	45	Amb. T + 5 -200	0,1	Stainless steel AISI 304	620 x 500 x 130	650 x 530 x 300
B205-DE	10000-01120	5				300 x 150 x 130	330 x 180 x 300
B212-DE	10000-01121	12				330 x 300 x 130	360 x 330 x 300
B220-DE	10000-01122	20				500 x 300 x 130	530 x 330 x 300
B245-DE	10000-01123	45				620 x 500 x 130	650 x 530 x 300

FEATURES

- Temperature controlled by microprocessor; with digital electrical regulation, for water or oil.
- Double skinned tank, inner tank made of stainless steel AISI 304 and metallic housing protected with Epoxi of great resistance to aggressive surroundings.
- Heating resistance of special alloy of stainless steel, heat and corrosion resistant.
- Digital display LCD backlit showing the selected and actual temperature.
- Integrated timer that allows (if needed) a programmed start during the next 24 hours.
- Membrane push-button control.
- Double safety thermostat:
 - The unit will cut out if there is insufficient liquid or if the temperature exceeds the maximum temperature.
 - Safety automatic disconnection with acoustic alarm that prevents overheating from the programmed temperature.
- Indication on the display of high temperature on the tank, that provides protection against burn.
- Automatic restart after unexpected shut down, keeping the same parameters as before the incident. An incident sign appears on the display.

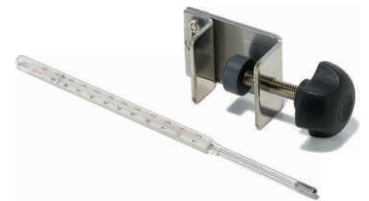


Description	COVER WITH DISC ADAPTERS		
Reference	20000-00100	20000-00101	20000-00102
Comment	With 2 disc adapters. For baths of 5 l.	With 4 disc adapters. For baths of 12 l.	With 6 disc adapters. For baths of 20 l or 2 units for baths of 45 l.



Description	CONSTANT LIQUID LEVEL*
Reference	20000-00111
Comment	For water baths *Order together with the bath (it has to be mounted in the factory).

Description	THERMOMETER AND SUPPORT
Reference	20000-00120
Comment	Max T 100° C



Description	SET OF DISC ADAPTERS
Reference	20000-00189



Description	COVER OF STAINLESS STEEL FOR BATHS			
Reference	20000-00105	20000-00106	20000-00107	20000-00108
Comment	For baths of 5 l.	For baths of 12 l.	For baths of 20 l.	For baths of 45 l.



Description	SUPPORT FOR TUBE RACKS		
Reference	20000-00161	20000-00162	20000-00163
Comment	For baths of 5 l.	For baths of 12 l.	For baths of 20 l or 2 units for baths of 45 l.



Description	TUBES RACKS		
Reference	20000-00164	20000-00165	20000-00166
Comment	For 36 tubes. Ø 13 mm.	For 24 tubes. Ø 16 mm.	For 24 tubes. Ø 20 mm.





BATH SHAKER C

Refrigerated digital bath with horizontal shaking



BSC127E + universal support

Model	BSC127E
Reference	10000-01136

Shaking

Max. vol. (l)	27
T range (°C)	10 - 100
Speed range (°C)	0,1

Shaking

Amplitude (mm)	40
Speed range (rpm)	10 - 100
Resolution (rpm)	5

General data

Tank material	Stainless steel
Inner dimensions (mm)	350 x 260 x 170
Ext. dimensions (mm)	850 x 400 x 400

FEATURES

- Temperature and speed controlled by microprocessor, by means of an integrated Pt100 sensor, with ARA V2fuzzy logic algorithm for temperature control of high precision.
- Mobile inner tank made of stainless steel AISI 304, and metallic housing protected with an Epoxi paint of great resistance to corrosion.
- Digital display LCD backlighted with indication of the selected an real value of temperature and speed.
- Membrane push-button control.
- CFC free compressor of 1/5 HP, noiseless and without vibration.
- Safety thermostat cut out indicator lamp.
- The unit will cut out if there is insufficient liquid or if the temperature exceeds the maximum temperature.
- Automatic restart after unexpected shut down keeping the same parameters as before the incident. An incident sign appear on the display.



A C C E S O R I E S

Description	COVER OF S. STEEL
Reference	20000-00110
Comment	For baths of 27 l.



Description	UNIVERSAL SUPPORT
Reference	20000-00142
Comment	With 5 rollers



Description	SUPPORT PLATTOM FOR ERLNMEYERS
Reference	20000-00132



Description	ERLENMEYER FLASK CLIPS
-------------	-------------------------------

Reference	20000-00046 50 ml. (max. 16 units)
Reference	20000-00047 100 ml. (max. 12 units)
Reference	20000-00048 250 ml. (max. 11 units)
Reference	20000-00049 500 ml. (max. 5 units)
Reference	20000-00099 1.000 ml. (max. 3 units)



Description	FASTENING SPRINGS (set of 2)
-------------	-------------------------------------

Reference	20000-00043
Comment	For fix vessels, flasks, etc.





BALL MIXER MILL EQM-400

Programmable speed



Model	EQM-400
Speed	100 to 2.000 shakes/min
Programs	5 independent programs
Timer range	0 - 100 min
Power supply	AC 230 V - 150 W
Weight	13 Kg
Display	LED
Dimensions (mm)	315 x 240 x 350 mm

BALLS				
Jars	10 mm Ø	15 mm Ø	20 mm Ø	25 mm Ø
25 ml	2 to 4	2 to 4	1 to 2	-
50 ml	6 to 8	4 to 6	1 to 2	1

FEATURES

- Crush, blend and homogenize.
- Reduce the grain size to 10 µ.
- Up to 15 g of sample.
- Only in 1 to 4 minutes.
- Two samples simultaneously.
- 5 working programs.
- Comfortably digital display.
- Easy and safe assembly.
- Stop working door's switch.
- microprocessor's controlled.
- User friendly.
- Accepts a wide range of samples



A C C E S O R I E S

Description

VIEW OF JARS AND BALLS

Comment

Mill accessories must be ordered separately according to the needs of end grain size and the type of sample.





Distributed by:

EQUiTEC

Blasco de Garay, 57 local
E-28015 Madrid
Tel / Fax 00 34 91 544 92 62
equitec@equitec.com.es
www.equitec.com.es
www.arcox.es

